

Recycled Polyimide Resin

The background is a vibrant green gradient. It features a central horizontal band of wavy, overlapping lines in various shades of green, creating a sense of movement and depth. Scattered throughout the background are several semi-transparent circles of different sizes, some solid and some with a grid-like pattern, adding a modern, abstract aesthetic.

Distributor : Good Life Co., Ltd.

What is recycled polyimide resin? .

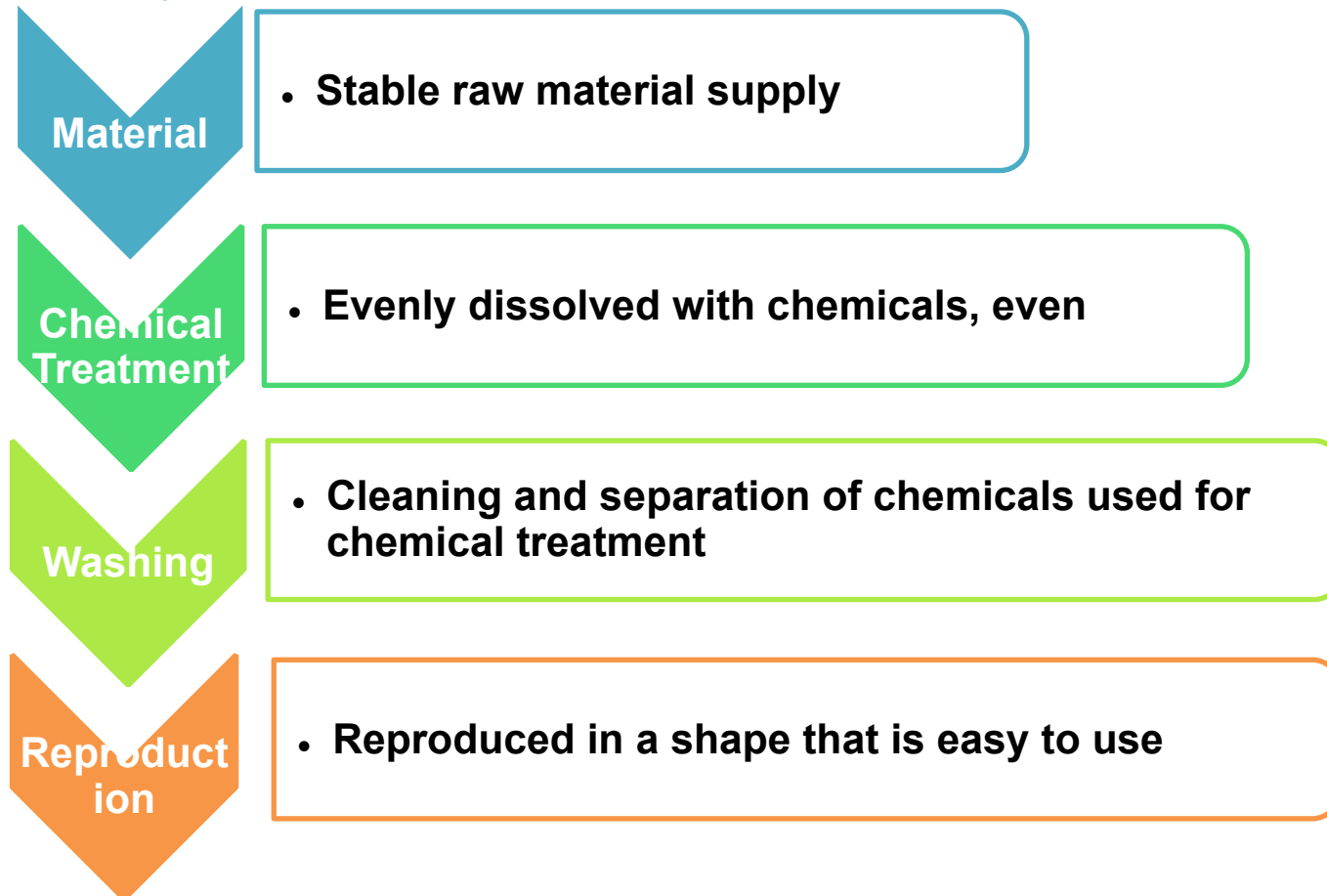
Made from heat-resistant and abrasion-resistant polyimide film scraps, it has been chemically treated to make it easy to reuse.

Despite being a recycled product, it is close to the original polyimide capacity.

Why not try the performance of polyimide film, which is expensive in both capacity and price, at an affordable price?



Manufacturing Process of Recycled Polyimide Resin



「 Polyamic Acid Varnish 」 (Liquid)

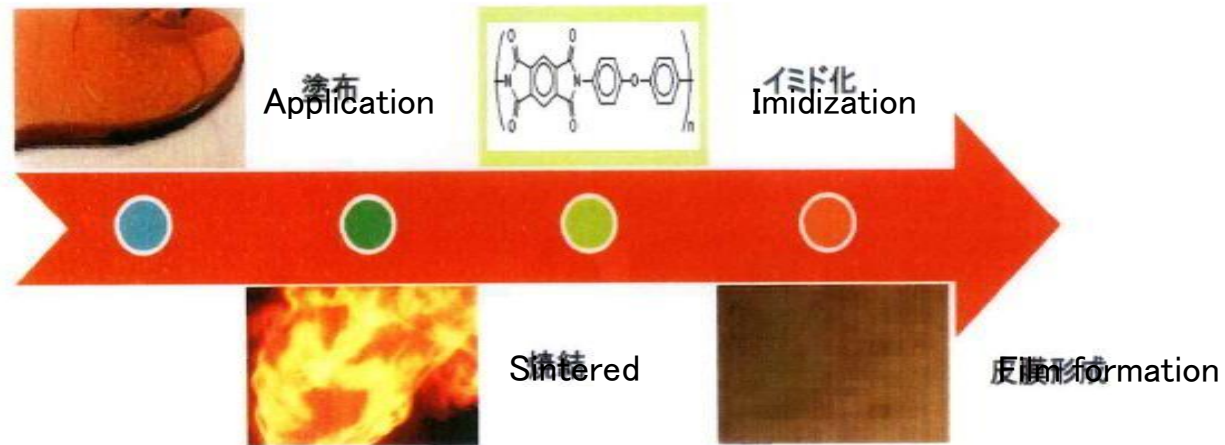
| Product name | Effective resin amount |
|--------------|------------------------|
| PIA-20 | 20% |
| PIA-25 | 25% |



☆ Product introduction

It is a product in which the powder in the precursor state generated in the process of powdering polyimide is dissolved by NMP and made into a solution.

By applying it to the adherend and sintering it at about 200 °C for 1 hour, imidization is promoted and a polyimide film is formed.



☆ Characteristic

- Heat resistance, chemical resistance, radiation resistance, plastic resistance, thermal insulation, flame retardancy
- After application, heat treatment is performed to easily form a film.

☆ Application example

- Heat and rust preventive paint
- High heat resistant coating material
- Insulation member



「 Polyimide Powder 」

(Powder)

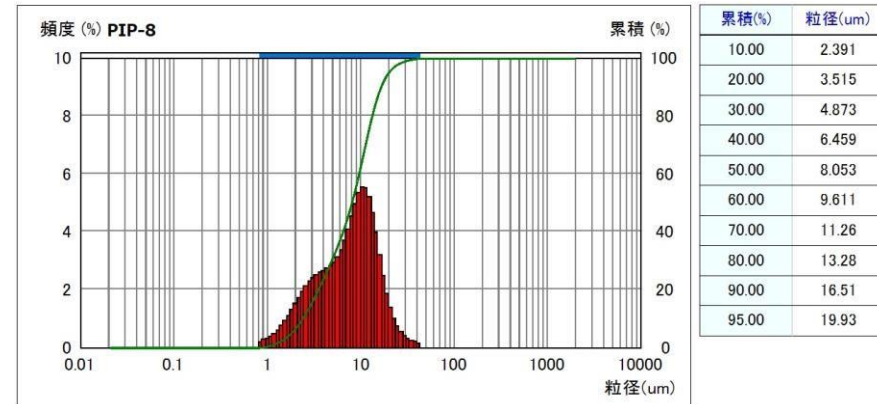
| Product name | Average particle size (μ) |
|--------------|---------------------------|
| PIP-8 | 8 |
| PIP-15 | 15 |
| PIP-25 | 25 |



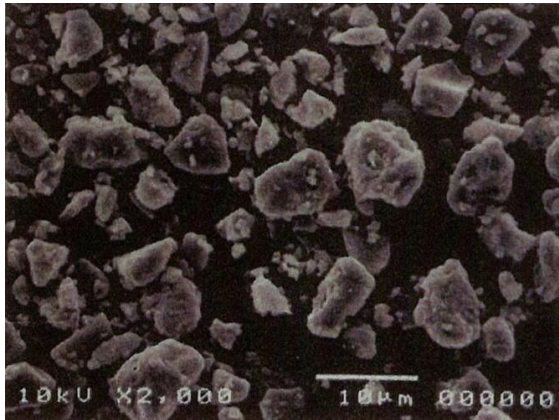
☆ Product introduction

If the original imidization rate is 100% for a product made by powdering offcuts by chemical crushing, the imidization rate is approximately 80 to 90%.

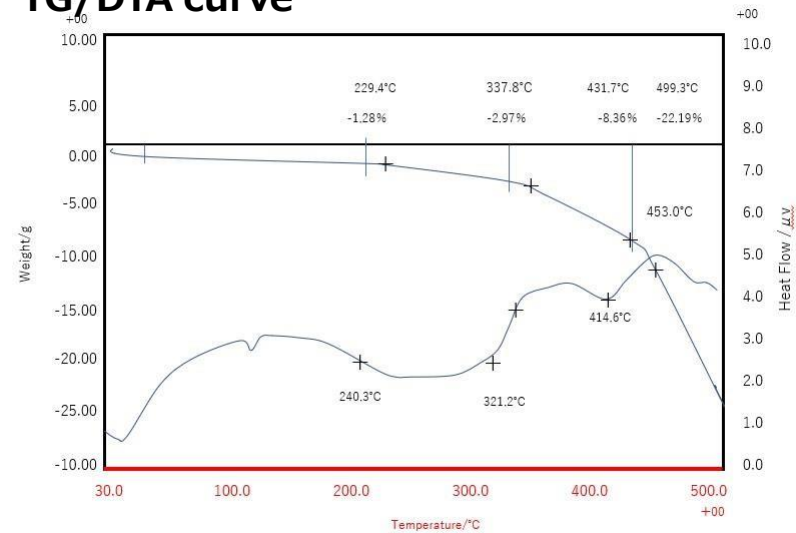
Three grades are available according to the particle size distribution.



SEM photo



TG/DTA curve



☆ Characteristic

- Heat resistance, chemical resistance, radiation resistance, plastic resistance, insulation, flame resistance

